

academy for fashion careers

NID DAT PRE MOCK PAPER II

TIME ALLOWED : 3 hrs
M. M. : 100

Design Aptitude Test (DAT)- Prelims

Section 1: GAT (m.m. 30)

THIS IS AN INDICATIVE PAPER.

YOU ARE SUPPOSED TO ATTEMPT ALL QUESTIONS.

QUESTIONS 1 to 20 CARRY 1 MARK. Q21-25 CARRY 2 MARKS. THERE SHALL BE NO NEGATIVE MARKING.

MARK YOUR ANSWER BY ENCIRCLING AND SHADING THE CHOICE IN PEN ONLY.

Any other Way of marking Your Answer Shall Result in Cancellation of Those No. of Answer Attempted.

Any question having more than one answer/eraser marks/ink marks/overwriting etc. shall not be accounted for.

Q1. REED, PICK, SHUTTLE, COMB. Identify the process/ field to which the given terms are related?
(a) badminton (b) weaving (c) rowing (d) pickle making (e) None of these

Q2. Match the following:

(i)	Glass	(1)	Seasoning
(ii)	Iron	(2)	Vacuum Molding
(iii)	Plastic	(3)	Annealing
(iv)	Fabric	(4)	Feeding
(v)	Chair	(5)	Smelting

a) i-3, iii-5, v-1, ii-4, iv-2

b) ii-4, v-5, i-3, iii-2, iv-1

c) iii-2, iv-4, i-3, v-1, ii-5

d) ii-3, iv-2, i-5, iii-1, v-4

(e) None of these

Q3. Find the odd one out

(a) Angora

(b) Mohair

(c) Nappa

(d) Cashmere

(e) None of these

Q4. Which of the following is not a green fuel?

(a) fossil fuel

(b) gasoline

(c) coal

(d) uranium

(e) none of these

Q5. Which of the following does not belong to the group?

(a) Tata Nexon

(b) MG ZS

(c) Hyundai Kona

(d) Nissan Magnite

(e) none of these

Q6. Which of the following works are not by Sandro Botticelli?

(a) Madonna and Child

(b) Irises

(c) Madonna with Child

(d) Fortitude (e) None of these

Q7. 'Pachisi' & 'Chuapad' are the type of?

(a) games

(b) weapons

(c) cooking vessels

(d) jewellery

(e) none of these

Q8. Match the following:

(i)	Ashtapad	(1)	Kho-kho
(ii)	Moksha Patam	(2)	Bull Fighting
(iii)	Krida Patram	(3)	Snake & Ladder
(iv)	Rathera	(4)	Playing Cards
(v)	Jallikattu	(5)	Chess

(a) i-5, iii-4, v-2, ii-3, iv-1

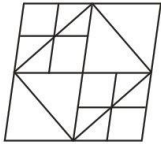
(b) ii-4, v-5, i-3, iii-2, iv-1

(c) iii-2, iv-4, i-3, v-1, ii-5

(d) ii-3, iv-2, i-5, iii-1, v-4

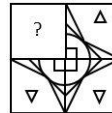
(e) None of these

Q9. How many triangles are there in the following fig.



- (a) 26 (b) 24 (c) 21 (d) 20 (e) none of these

Q10. Which answer figure will complete the pattern in the question figure?



- (a) (b) (c) (d) (e) none of these

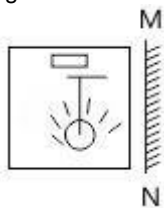
Q11. A word is represented by only one set of numbers as given in any one of the alternatives. The sets of numbers given in the alternatives are represented by two classes of alphabets as in two matrices given below. The columns and rows of Matrix I are numbered '0' form 0 to 4 and that Matrix II are numbered from 5 to 9. A letter from these matrices can be represented first by its row and next by its column, e.g., 'A' can be represented by 01, 14, etc. and E can be represented by 55, 66 etc.

Similarly, you have to identify the set for the word 'SCALE'.

Matrix - I					Matrix - II						
	0	1	2	3	4	5	6	7	8	9	
0	P	A	C	R	Z	5	E	M	L	N	O
1	C	S	Z	P	A	6	L	E	O	M	N
2	Z	P	S	C	S	7	O	N	E	L	M
3	A	C	R	Z	P	8	N	O	M	E	L
4	S	Z	P	A	C	9	M	L	N	O	E

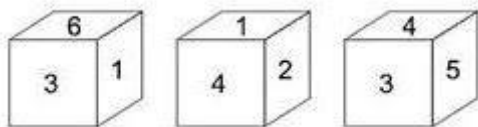
- (a) 11, 31, 43, 85, 55 (b) 22, 44, 30, 65, 99 (c) 40, 02, 03, 96, 77 (d) 24, 13, 14, 57, 66 (e) None of these

Q12. If a mirror is placed on the line MN, then which of the answer figures is the right image of the given figure?



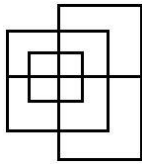
- (a) (b) (c) (d) (e) None of these

Q13. Three positions of a cube are shown below. What will come opposite to face containing '5'?



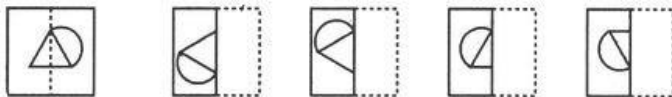
- (a) 6 (b) 1 (c) 2 (d) can't be determined (e) none of these

Q14. Find the minimum number of straight lines required to make the given figure.



- (a) 11 (b) 12 (c) 13 (d) 15 (e) none of these

Q15. Find out from amongst the four alternatives as to how the pattern would appear when the transparent sheet is folded at the dotted line.



- (a) 4 (b) 3 (c) 2 (d) 1 (e) none of these

Q 16. Choose the alternative which is closely resembles the mirror image of the given combination.

AN54WMG3

(1) 3G4WMA2A

(2) 3GMW32NA

(3) 3GMW2NA

(4) 3GMW32NA

- (a) 1 (b) 4 (c) 3 (d) 2 (e) None of these

Q17. If first four letters of the English alphabet are written in reverse order; again next 5 letters are written in reverse order; again next 6 letters are written in reverse order; next 7 letters are written in reverse order and finally, the remaining letters are also written in reverse order, then what will be the 7th letter to the left of the 8th letter from right?

- (a) M (b) O (c) S (d) Q (e) T

Q18. Brothers and sisters I have none but this man's father is my father's son. Who is the man?

- (a) me (b) my daughter (c) my son (d) my father (e) None of these

Q19. In how many languages is the currency value printed in the role of 2000 denomination?

- (a) 17 (b) 15 (c) 22 (d) 19 (e) None of these

Q20. Reading of a barometer going down is an indication of

- (a) snow (b) storm (c) rainfall (d) intense heat (e) none of these

Q21. SUNDAY, MONDAY TUESDAY WEDNESDAY THURSDAY FRIDAY SATURDAY
 What day comes three days after the day which comes two days after the day which comes immediately after the day which comes two days after Monday?

- (a) Tuesday (b) Monday (c) Friday (d) Wednesday (e) None of these

Q22. At each stage the black dot moves three corners clockwise and the white dot moves four corners anticlockwise. After how many stages will both dots be together in the same corner?



- (a) Two (b) four (c) seven (d) nine (e) None of these

Q23. A factory was cutting rolls of cloth into 1 metre lengths, from a 200 metre roll. How long would it take for the machine to cut the roll if each cut took 4 secs?

- (a) 13.27 mins (b) 800 secs (c) 13.33 min (d) 796 sec. (e) none of these

Q24. Place two letters in each set of brackets so that they form a word when tacked onto the letters on the left and form another word when placed in front of the letters on the right. The letters placed in the brackets must produce an eight letter word when read downwards in pairs.

- HE (**) LY
 HO (**) AR
 AU (**) NK
 CO (**) CH
 (a) FRIGHTEN (b) DREAMING (c) FLUTTERS (d) RESTRAIN (e) None of these



- Q25. which field is the given image related to?
 (a) aviation (b) physics (c) agriculture (d) photography (e) None of these

academy for fashion careers

NID DAT PRE MOCK TEST PAPER II
Design Aptitude Test (DAT)- Prelims

Section 2: CAT (m.m.70)

YOU ARE SUPPOSED TO ATTEMPT ALL QUESTIONS.

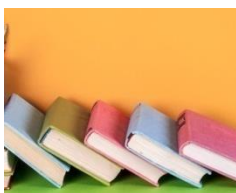
You may use dry colours only wherever required or asked for. You shall be marked on your drawing & illustration skills, creative imagination, technical skills, attention to details, uniqueness, originality and innovative ideas.

Q1. Given below are 4 images of books, suggest 4 words (one for each image) that come to your mind when you look at them. Using the four words given by you and ANY THREE from the given list, write a ONE SENTENCE short story. Give a title to your story.

GIVEN LIST: MONKE, ONION, RED, ROPE, CYCLE, SWOLLOW, SHOE, BAT, LIGHT



(a) (b) (c)



(d) _____

(5+10=15marks)

Design 2.



Use the below given space for rough work



AFCMT/DAT-Prelims/2K20-NID02(contd.)

Q3. Sketch the inside view of a room having the given elements in it. You must bring out ONE of the given moods in the room. You may choose your view and add other elements that you want. The room must have: a split AC, A rocking chair, a table, a lamp, a ceiling fan, a planter, a stool, a pet, two magazines, a laptop, a digital camera and a carpet.

Moods(choose any one): LAZY, FORMAL, ARISTOCRATIC, CHAOTIC, KIDDISH, ROMANTIC

(15 marks)

A large, empty rectangular box with a thin black border, intended for the student to draw a sketch of a room's interior based on the given elements and mood.



AFCMT/DAT-Prelims/2K20-NID02(contd.)

Q4. Redraw the same room from the perspective of the spider hanging from the top right corner of the wall of the room as drawn by you in Ques 3. Above.

(10 marks)